

MidiBro Setup Guide for FL Studio

Overview

MidiBro connects to FL Studio through the **MidiBroConnectorPlugin** using FL Studio's MIDI port routing system. The plugin outputs MIDI on a specific port number, and your synth receives on that same port number.

Prerequisites

- MidiBro installed and registered
- MidiBroConnectorPlugin VST3 installed
 - Windows: *C:\Program Files\Common Files\VST3*
 - Mac: */Library/Audio/Plug-Ins/VST3/*
- FL Studio 20 or newer

Setup Steps

▶ Step 1: Add the MidiBro Connector Plugin

- Open FL Studio and create or open a project
- Open the **Channel Rack** (F6)
- Click the + button and select **Add one -> More plugins...**
- Find and add "**MidiBro Connector Plugin**"
- The plugin window will open

▶ Step 2: Configure MidiBro Plugin Output Port

- Click the **gear icon** (Wrapper Settings) at the top-left of the plugin window
- In the **Settings** tab, find the **MIDI** section
- Set **Output port** to a number (e.g., 6)
- Leave Input port as default

▶ Step 3: Add Your Synth Plugin

- In the Channel Rack, add your synth (Sytrus, Serum, Kontakt, etc.)
- Click the **gear icon** (Wrapper Settings) for the synth
- In the **Settings** tab, find the **MIDI** section
- Set **Input port** to the **same number** as MidiBro's output (e.g., 6)

► Step 4: Launch MidiBro and Enable Plugin Mode

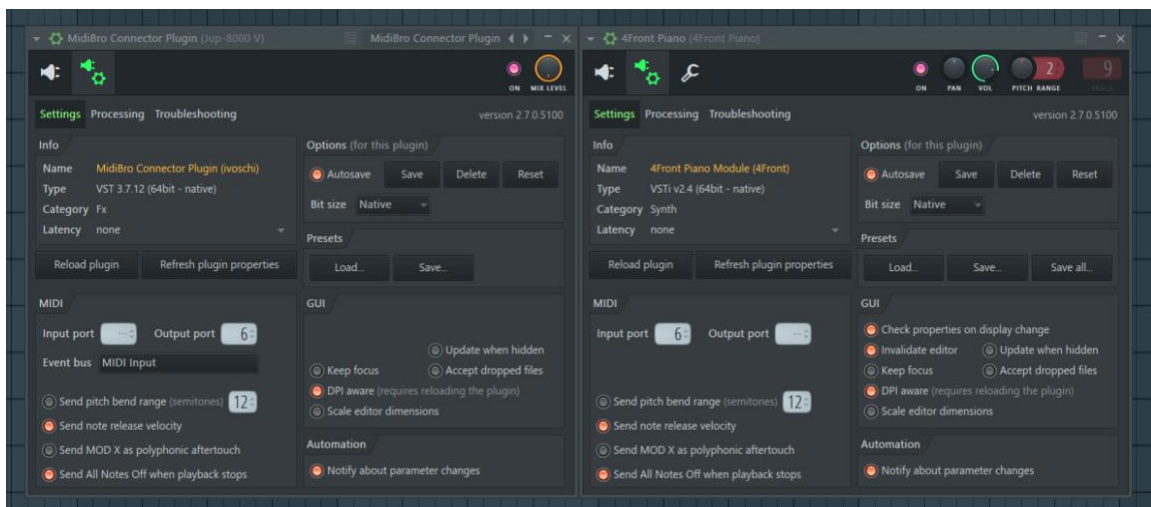
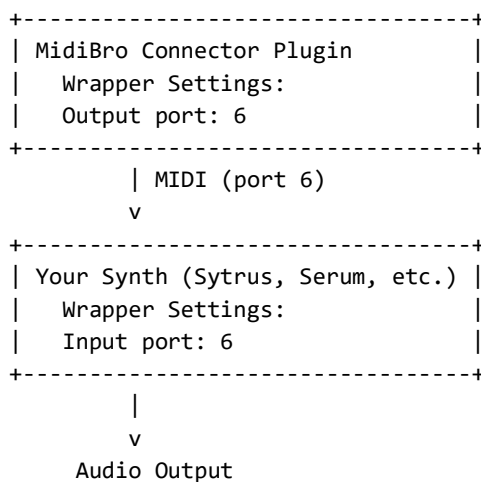
- Open **MidiBro** standalone application
- In the right panel, locate the **Audio Output** section
- Click "**Plugin in DAW**" to enable plugin mode

► Step 5: Verify Connection

- **MidiBro status bar** shows: "Plugin: 1 connected"
- **Plugin window** shows: "Status: Connected to MidiBro App"

Visual Diagram

Channel Rack:



Important Notes

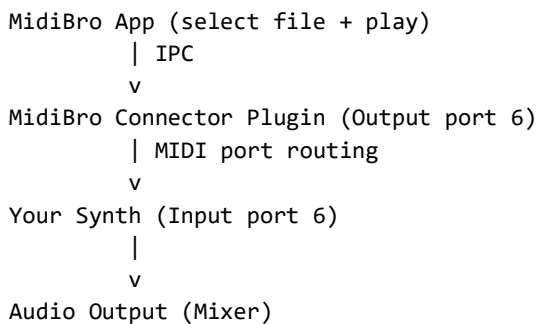
- The **port numbers must match** between MidiBro (output) and synth (input)

- Use a **unique port number** not used by other plugins (1-255)
- Port routing only works with **third-party VST plugins**, not native FL plugins
- For native FL plugins, use **Patcher** as a workaround

Test Playback

- Select a MIDI file in MidiBro's file browser
- Click **Play** in MidiBro
- MIDI flows: MidiBro Plugin (port 6 out) -> Synth (port 6 in) -> Audio

Signal Flow



Troubleshooting

Problem	Solution
Plugin not found	Rescan plugins: Options -> Manage plugins -> Find more plugins
No sound	Ensure port numbers match exactly
No sound	Verify synth Input port is set correctly in Wrapper Settings
"Disconnected" status	Ensure plugin is loaded before enabling Plugin mode in MidiBro
Native FL plugin won't receive MIDI	Use Patcher, or use a third-party VST synth instead

Using Patcher (for Native FL Plugins)

If you need to use native FL plugins (like Sytrus or Harmor):

- Add **Patcher** to the Channel Rack
- Inside Patcher, add both MidiBro Connector Plugin and your native FL plugin
- Connect the MIDI output of MidiBro to the input of the FL plugin
- Connect the audio output of the FL plugin to Patcher's output

Enabling DAW Sync (Optional)

For synchronized playback:

- Toggle "**Sync to DAW**" ON in MidiBro's right panel
- Start **FL Studio transport first**
- Then click Play in MidiBro

Tips

- Use port numbers in the range 1-16 for simplicity
- Keep a consistent port number scheme across projects
- You can route one MidiBro plugin to multiple synths using the same input port

Support

Contact: ivo@midibro.de

References

- [FL Studio MIDI Routing FAQ](https://www.codefn42.com/faq_routing_flstudio.html)
- [FL Studio MIDI Out Plugin Manual](<https://www.image-line.com/fl-studio-learning/fl-studio-online-manual/html/plugins/MIDI%20Out.htm>)